

CARGO CRANE

For Large Size Truck

ZE500GHR series
ZE500HRS series
(Oceania)



IDEAL Cargo Crane, TADANO ZE

The ZE features all the Tadano Cargo Crane technology that is recognized the world over. The key development concepts remain: EXCELLENT QUALITY, EASY OPERATION AND EASY MAINTENANCE.

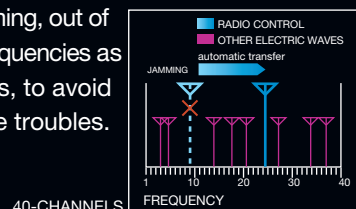
The ZE500GHRS with the maximum lifting capacity of 4.04 tons has a choice of 3 different lengths of the boom while the ZE500HRS with the maximum lifting capacity of 3.13 tons has a choice of 4 different lengths of the boom, to meet your lifting solutions.

RADIO CONTROLLER WITH LIQUID-CRYSTAL DISPLAY



Newly Developed Radio Controller, of low electric power consumption type, displays at all times operating conditions such as the actual load, rated load, moment ratio on the liquid-crystal screen to further enhance safety and working efficiency.

High-Powered Radio Controller
Radio Controller with powerful transmitting output automatically selects a frequency free of jamming, out of as many frequencies as 40 channels, to avoid interference troubles.



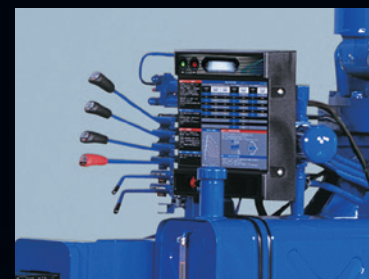
40-CHANNELS

RESPONDING TO OPERATOR'S COMMAND

Equipped with an optimally matched, high-performance control

valve, the operating levers provide improved responsiveness and fine-tuned control. Operation is fast or slow in accordance with operator's command.

The stainless rods between left and right operation levers are provided as standard.



CONTROL LEVER

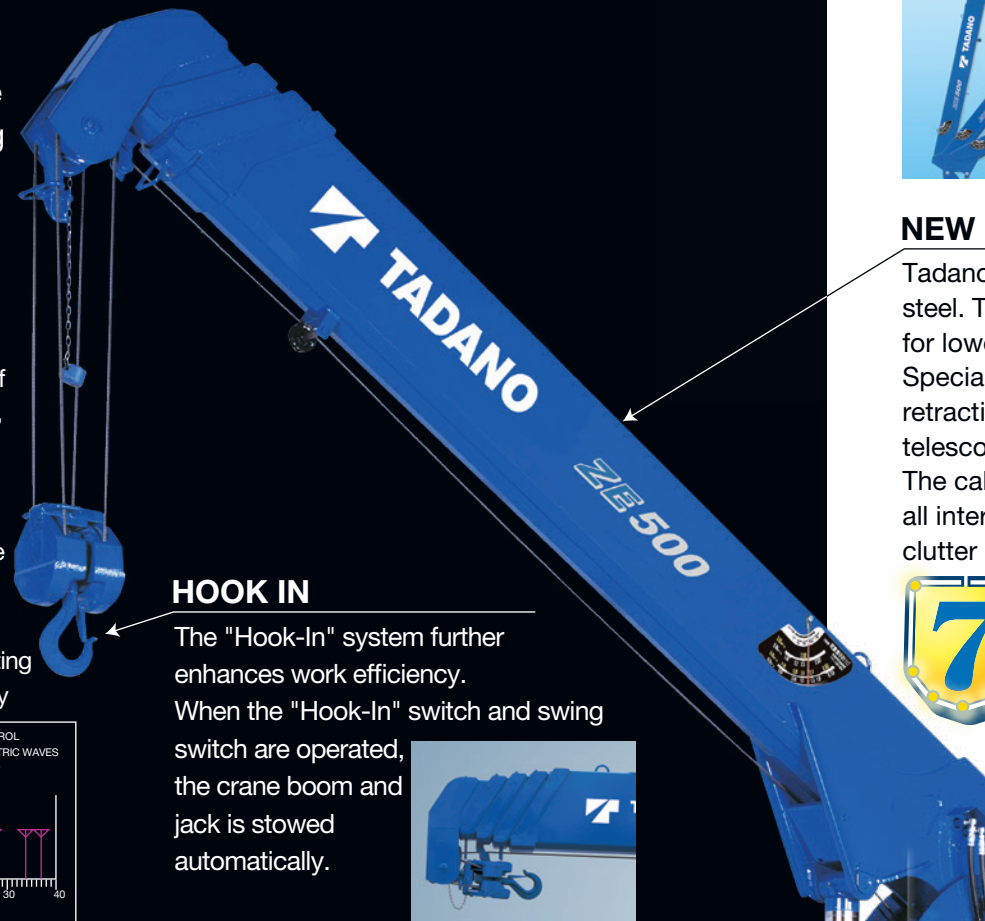
CENTRALIZED CONTROL PANELES

Installed on both sides of the swing post is the centralized control panel where operating switches and the lifting chart needed for crane operation are grouped together and arranged on a single panel.



LEFT-HAND SIDE

RIGHT-HAND SIDE



HOOK IN

The "Hook-In" system further enhances work efficiency. When the "Hook-In" switch and swing switch are operated, the crane boom and jack is stowed automatically.



BOOM HEIGHT LIMIT FUNCTION

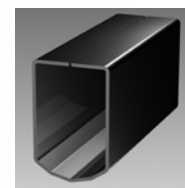
WHL (Working Height Limiter) is designed to stop the boom elevation or telescoping when the boom tip reaches the registered height. (as pre programmed by the operator)



This function secures safety particularly when working under the roof or in the tunnel or every height limited condition.

NEW HEPTAGONAL BOOM

Tadano's unique heptagonal boom is made of high-tensile steel. The new boom is a structure of one piece steel plate for lower boom weight and powerful lifting capacity. Special valves enable smooth boom extension and retraction for smoother operation to reduce a shock when telescoping the boom. The cables and sheaves are all internal - for a clean, clutter - free appearance.



AML

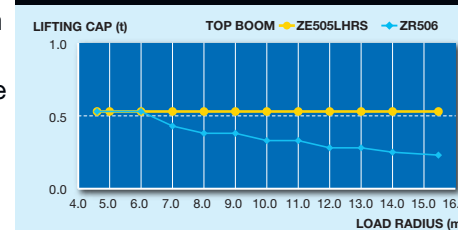
The AML is a system that monitors and controls crane working conditions including the state of a lifted load to ensure safer operation in addition to the outrigger middle extension function now available for the model.

NEW FIVE-SECTION LONG BOOM

The ZE505LHRS with a five-section long boom makes its debut in the market which supersedes the ZR506 (previous model, six-section boom).

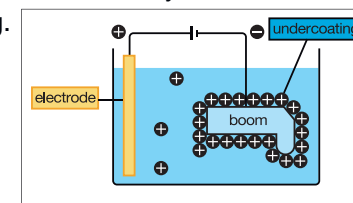
The newly developed five-section boom makes the same length as the conventional six-section boom and enhance crane performance by max. 130% compared to the conventional six-section boom.

ZE505LHRS vs ZR506 (Previous model)
Lifting Chart at Fully boom extended.



CATIONIC ELECTRO-DEPOSITION COATING

The undercoating of the crane is done by Cationic Electro-deposition coating. Soaking each materials and even the narrow inner booms and frames are thoroughly undercoated.



* Except 5L section boom

GREATER WINCH

The advantages from the enlarged winch drum and plunger motor are evident during start-up when maximum power is required. Re-hoisting with a load on the hook can also be handled with ease. The winch reduction gear comes equipped with a failsafe automatic brake.



JACK INTERLOCK

Jack interlock system ensures that outriggers are deployed before crane is allowed to be unfolded. Automatic crane capacity deration should horizontal outrigger extension be not fully extended.

FULL CIRCLE, CONTINUOUS SWING

The newly designed compact swing post improves performance providing FULL CIRCLE, continuous rotation for more efficient operations.

AUTOMATIC SWING LOCK:
The boom is mechanically locked at the swing post base which prevents boom rotation during vehicle travel.



THREE-POINT SUPPORT SYSTEM (Equalizer Crane Support)

Tadano's Equalizer Crane Support protects the truck frame from stress.

The crane is mounted to the truck chassis with the Equalizer Crane Support that evenly distributes the load to prevent excessive stress concentration at any one point.

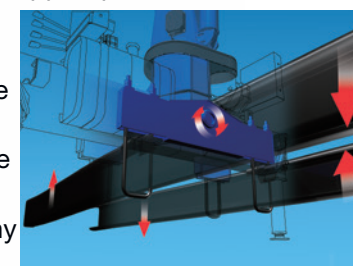


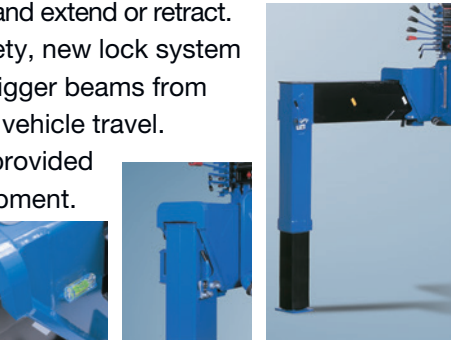
Photo: ZE504HRS

ZE500GHRs series

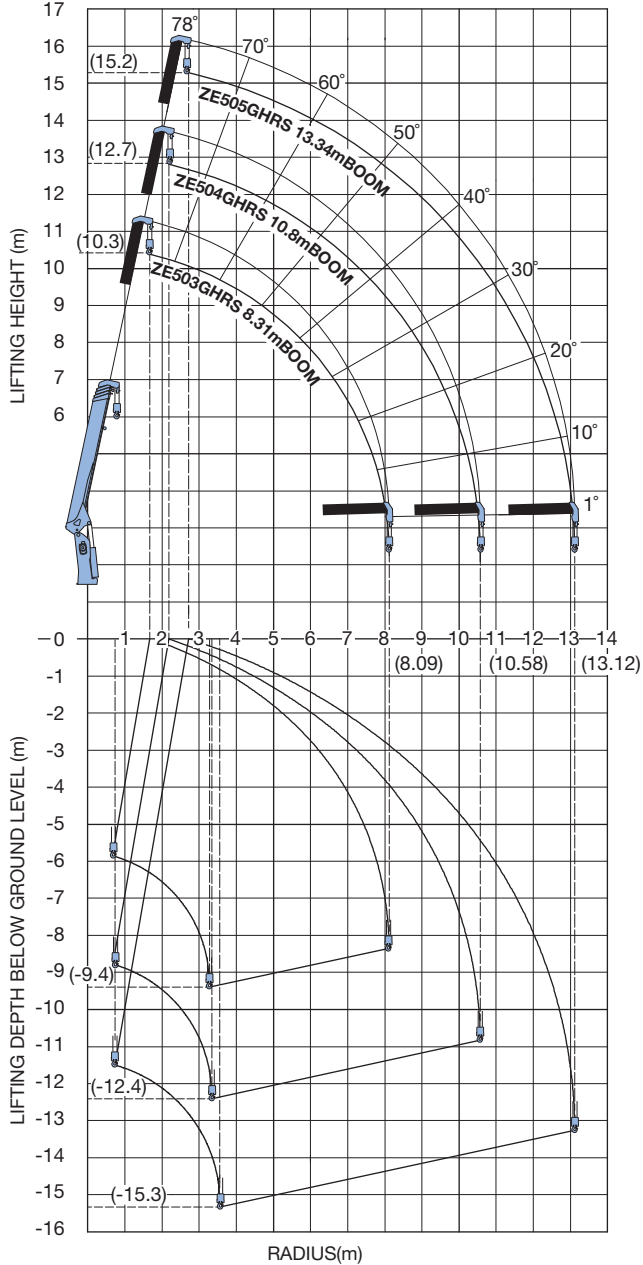


QUICKER WORK WITH OUTRIGGER MECHANISM

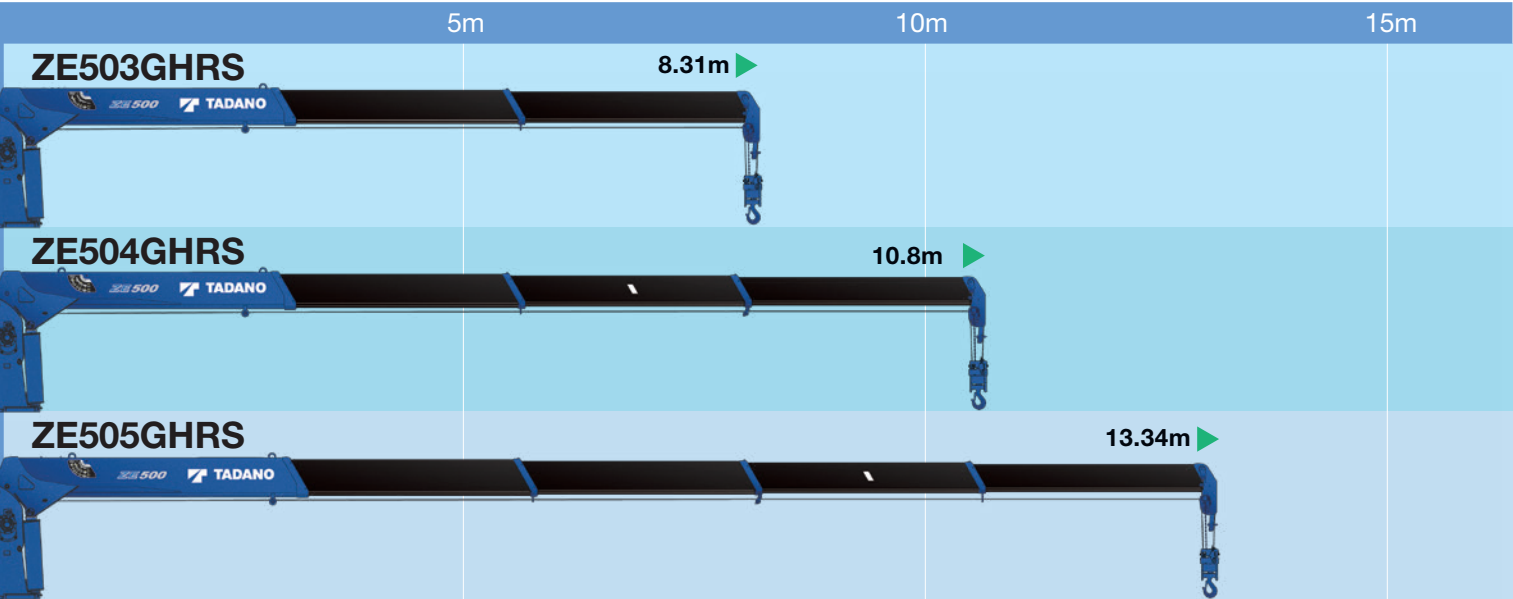
The outrigger beams can be easily operated, using a grip to lock or release and extend or retract. Further more safety, new lock system prevents the outrigger beams from extending during vehicle travel. A level gauge is provided as standard equipment.



WORKING RANGE



NOTE: The above lifting heights and boom angles are based on a straight (unladen) boom, and allowance should be made for boom deflection obtained under laden conditions.



* The cables and sheaves are all internal - for a clean, clutter - free appearance.

► Max.Boom Extended length

TECHNICAL SPECIFICATIONS

MODEL	ZE503GHRs		ZE504GHRs	ZE505GHRs
CRANE CAPACITY	4,040kg at 2.95m (5-part lines)		4,040kg at 2.9m (5-part lines)	4,040kg at 2.8m (4-part lines)
BOOM	Fully hydraulic telescoping boom of heptagonal box construction		Fully powered partly synchronized telescoping boom of heptagonal box construction	
Sections	3		4	5
Length	3.47m - 8.31m		3.55m - 10.8m	3.77m - 13.34m
Extending Speed	4.84m / 18s		7.25m / 21s	9.57m / 25s
Elevation Range/Speed	1° to 78° /12s			
Max. Hook Height*	Approx. 10.3m*		Approx. 12.7m*	Approx. 15.2m*
Max. Load Radius*	8.09m*		10.58m*	13.12m*
WINCH	Hydraulic motor driven. Spur gear speed reduction, provided with mechanical brake.			
Max. Single Line Pull	7.92kN {808kgf}			
Max. Single Line Speed	76m/min. (at 4th layer)			
Wire rope (Diameter x length)	8mm x 67m		8mm x 82m	8mm x 97m
SWING	Hydraulic motor driven. Worm gear speed reduction. Continuous 360° full circle swing on ball bearing slew ring. Automatic swing lock.			
Speed	2.5 min ⁻¹ {rpm}			
OUTRIGGERS	Manually extended sliders and hydraulically extended jacks Integral with crane frame Power up and down Max.: 3.8m, Mid.: 3.0m, Min.: 2.2m			
Extended Width				
HYDRAULIC SYSTEM	Multiple control valves with integral safety valve			
Control Valves				
STANDARD SAFETY EQUIPMENT	•AML(Automatic Moment Limiter) <Load indication, Load moment ratio to rated load indication, Warning alarm, Over load limiter> •WHL(Working Height Limiter) •Load meter •Radius indicator •Emergency stop switch on radio controller •Terminal for emergency stop switch •Over-winding alarm •Hoisting limiter •Jack interlock •P.T.O indicator lamp •Hook safety latch •Hydraulic safety valves, check valves and holding valves •Level gauge			
SUITABLE TRUCKS	Gross vehicle mass 12,000 to 25,000kg			

RATED LIFTING CAPACITIES - Empty Chassis

Table A									
ZE503GHRs									
• 3.47m/5.91m boom									
Load Radius (m)	2.8 and below	3.3	3.6	4.1	4.5	5.0	5.5	5.69	
Rated Lifting Capacity (kg)	4,040	3,280	2,930	2,430	2,030	1,730	1,430	1,380	
• 8.31m boom									
Load Radius (m)	3.4 and below	3.8	4.1	4.5	5.0	5.5	6.0	6.5	7.0
Rated Lifting Capacity (kg)	3,130	2,680	2,430	2,030	1,730	1,430	1,180	1,030	930
ZE504GHRs									
• 3.55m/5.99m boom									
Load Radius (m)	2.8 and below	3.6	4.0	4.5	5.0	5.5	6.0	6.5	7.0
Rated Lifting Capacity (kg)	4,040	2,930	2,430	1,980	1,680	1,380	1,180	1,030	930
• 8.39m boom									
Load Radius (m)	3.0 and below	3.6	4.0	4.5	5.0	5.5	6.0	6.5	7.0
Rated Lifting Capacity (kg)	3,130	2,930	2,430	1,980	1,680	1,430	1,180	1,030	900
• 10.8m boom									
Load Radius (m)	4.0 and below	4.5	5.0	6.0	7.0	8.0	9.0	10.0	10.58
Rated Lifting Capacity (kg)	2,130	1,980	1,630	1,180	1,000	800	680	580	550
ZE505GHRs									
• 3.77m/6.21m boom									
Load Radius (m)	2.8 and below	3.6	3.9	4.5	5.0	5.5	6.0	6.5	7.0
Rated Lifting Capacity (kg)	4,040	2,930	2,530	1,930	1,630	1,380	1,180	1,030	930
• 8.59m boom									
Load Radius (m)	3.4 and below	3.6	3.9	4.5	5.0	5.5	6.0	6.5	7.0
Rated Lifting Capacity (kg)	3,130	2,930	2,530	1,930	1,630	1,380	1,180	1,030	830
• 10.97m boom									
Load Radius (m)	4.0 and below	4.5	5.0	6.0	7.0	8.0	9.0	10.0	10.75
Rated Lifting Capacity (kg)	2,230	1,930	1,580	1,130	900	700	550	500	450
• 13.34m boom									
Load Radius (m)	5.0 and below	6.0	7.0	8.0	9.0	10.0	11.0	12.0	13.12
Rated Lifting Capacity (kg)	1,430	1,130	900	700	550	500	430	400	350
Table B									
ZE503GHRs									
• 3.47m/5.91m boom									
Load Radius (m)	2.95 and below	3.5	4.1	4.5	5.0	5.5	6.0	6.5	7.0
Rated Lifting Capacity (kg)	4,040	3,380	2,930	2,480	2,080	1,780	1,480	1,280	1,030
• 8.31m boom									
Load Radius (m)	3.8 and below	4.1	4.5	5.0	5.5	6.0	6.5	7.0	7.5
Rated Lifting Capacity (kg)	3,130	2,930	2,480	2,080	1,780	1,580	1,430	1,280	1,030
ZE504GHRs									
• 3.55m/5.99m boom									
Load Radius (m)	2.9 and below	3.7	4.0	4.5	5.0	5.5	6.0	6.5	7.0
Rated Lifting Capacity (kg)	4,040	3,130	2,930	2,430	2,030	1,730	1,430	1,230	980
• 8.39m boom									
Load Radius (m)	3.7 and below	4.0	4.5	5.0	5.5	6.0	6.5	7.0	7.5
Rated Lifting Capacity (kg)	3,130	2,930	2,430	2,030	1,730	1,480	1,380	1,230	1,080
• 10.8m boom									
Load Radius (m)	4.5 and below	5.0	6.0	7.0	8.0	9.0	10.0	10.58	
Rated Lifting Capacity (kg)	2,130	1,980	1,480	1,180	950	880	730	680	
ZE505GHRs									
• 3.77m/6.21m boom									
Load Radius (m)	2.8 and below	3.6	3.9	4.5	5.0	5.5	6.0	6.5	7.0
Rated Lifting Capacity (kg)	4,040	3,130	2,930	2,430	1,980	1,680	1,380	1,180	1,030
• 8.59m boom									
Load Radius (m)	3.6 and below	3.9	4.5	5.0	5.5	6.0	6.5	7.0	7.5
Rated Lifting Capacity (kg)	3,130	2,930	2,430	1,980	1,680	1,430	1,280	1,130	1,030
• 10.97m boom									
Load Radius (m)	4.0 and below	4.5	5.0	6.0	7.0	8.0	9.0	10.0	10.75
Rated Lifting Capacity (kg)	2,230	2,180	1,930	1,430	1,130	880	730	650	580
• 13.34m boom									
Load Radius (m)	5.0 and below	6.0	7.0	8.0	9.0	10.0	11.0	12.0	13.12
Rated Lifting Capacity (kg)	1,430	1,330	1,130	880	730	650	550	500	430

TECHNICAL SPECIFICATIONS NOTE:

- Operating speeds of the crane are guaranteed under the conditions that the pump delivery is 60L/min.
- * No allowance made for boom deflection under laden conditions.

Table C

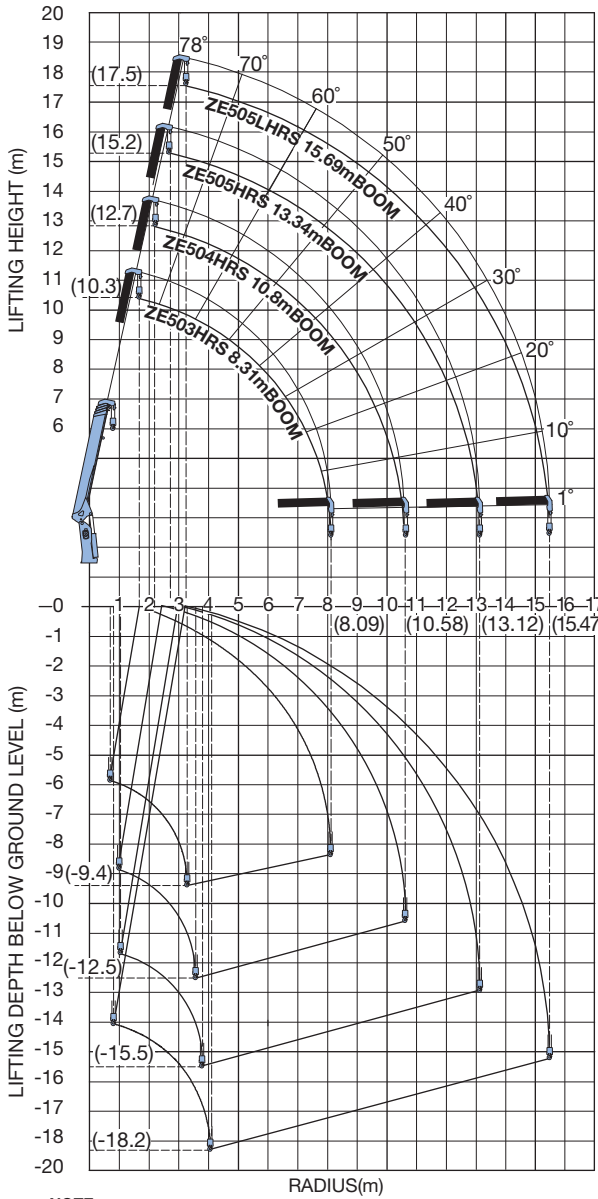
ZE503GHRs									
• 3.47m/5.91m boom									
Load Radius (m)	2.95 and below	3.8	4.1	4.5	5.0	5.5	6.0	6.5	7.0
Rated Lifting Capacity (kg)	4,040	3,130	2,930	2,630	2,380	2,130	2,030		
• 8.31m boom									
Load Radius (m)	3.8 and below	4.1	4.5	5.0	5.5	6.0	6.5	7.0	7.5
Rated Lifting Capacity (kg)	3,130	2,930	2,630	2,380	2,130	1,880	1,730	1,530	1,380
ZE504GHRs									
• 3.55m/5.99m boom									
Load Radius (m)	2.9 and below	3.7	4.0	4.5	5.0	5.5	6.0	6.5	7.0
Rated Lifting Capacity (kg)	4,040	3,130	2,930	2,580	2,330	2,030	1,830	1,650	1,480
• 8.39m boom									
Load Radius (m)	3.7 and below	4.0	4.5	5.0	5.5	6.0	6.5	7.0	7.5
Rated Lifting Capacity (kg)	3,130	2,930	2,580	2,330	2,030	1,830	1,650	1,480	1,350
• 10.8m boom									
Load Radius (m)	4.5 and below	5.0	6.0	7.0	8.0	9.0	10.0	10.58	
Rated Lifting Capacity (kg)	2,130	2,030	1,780	1,480	1,200	1,030	900	830	
ZE505GHRs									
• 3.77m/6.21m boom									
Load Radius (m)	2.8 and below	3.6	3.9	4.5	5.0	5.5	6.0	6.5	7.0
Rated Lifting Capacity (kg)	4,040	3,130	2,930	2,530	2,230	1,980	1,780	1,580	1,430
• 8.59m boom									
Load Radius (m)	3.6 and below	3.9	4.5	5.0	5.5	6.0	6.5	7.0	7.5
Rated Lifting Capacity (kg)	3,130	2,930	2,530	2,230	1,980	1,730	1,580	1,430	1,250
• 10.97m boom									
Load Radius (m)	4.0 and below	4.5	5.0	6.0	7.0	8.0	9.0	10.0	10.75
Rated Lifting Capacity (kg)	2,230	2,180	2,030	1,730	1,400	1,100	950	800	730
• 13.34m boom									
Load Radius (m)	5.0 and below	6.0	7.0	8.0	9.0	10.0	11.0	12.0	13.12
Rated Lifting Capacity (kg)	1,430	1,330	1,230	1,080	950	800	700	630	530

Table D

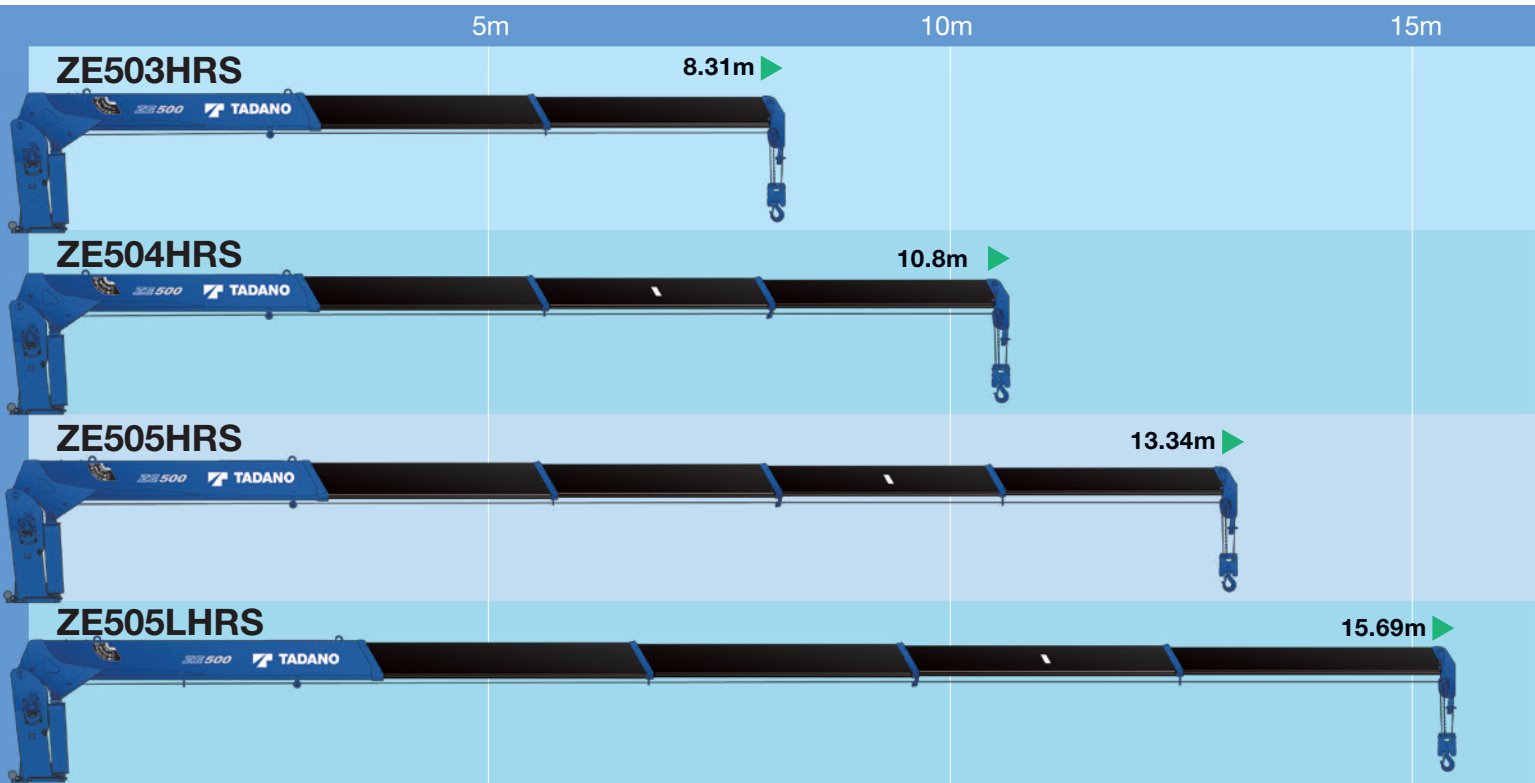
ZE503GHRs									
• 3.47m/5.91m boom									
Load Radius (m)	2.95 and below	3.8	4.1	4.5	5.0	5.5	5.69		
Rated Lifting Capacity (kg)	4,040	3,130	2,930	2,630	2,380	2,180	2,080		
• 8.31m boom									
Load Radius (m)	3.8 and below	4.1	4.5	5.0	5.5	6.0	6.5	7.0	8.09
Rated Lifting Capacity (kg)	3,130	2,930	2,630	2,380	2,180	1,980	1,830	1,680	1,530
1,430									
ZE504GHRs									
• 3.55m/5.99m boom									
Load Radius (m)	2.9 and below	3.7	4.0	4.5	5.0	5.77			
Rated Lifting Capacity (kg)	4,040	3,130	2,930	2,580	2,330	2,030			
• 8.39m boom									
Load Radius (m)	3.7 and below	4.0	4.5	5.0	5.5	6.0	6.5	7.0	8.17
Rated Lifting Capacity (kg)	3,130	2,930	2,580	2,330	2,080	1,930	1,780	1,630	1,480
1,380									
• 10.8m boom									
Load Radius (m)	4.5 and below	5.0	6.0	7.0	8.0	9.0	10.0	10.58	
Rated Lifting Capacity (kg)	2,130	2,030	1,780	1,530	1,380	1,200	1,050	1,000	
ZE505GHRs									
• 3.77m/6.21m boom									
Load Radius (m)	2.8 and below	3.6	3.9	4.5	5.0	5.5	5.99		
Rated Lifting Capacity (kg)	4,040	3,130	2,930	2,530	2,230	1,980	1,780		
• 8.59m boom									
Load Radius (m)	3.6 and below	3.9	4.5	5.0	5.5	6.0	6.5	7.0	8.37
Rated Lifting Capacity (kg)	3,130	2,930	2,530	2,230	1,980	1,780	1,630	1,480	1,380
1,180									
• 10.97m boom									
Load Radius (m)	4.0 and below	4.5	5.0	6.0	7.0	8.0	9.0	10.0	10.75
Rated Lifting Capacity (kg)	2,230	2,180	2,030	1,730	1,430	1,230	1,080	980	900
• 13.34m boom									
Load Radius (m)	5.0 and below	6.0	7.0	8.0	9.0	10.0	11.0	12.0	13.12
Rated Lifting Capacity (kg)	1,430	1,330	1,230	1,080	980	880	800	730	650

Maximum 3,800 mm

The outrigger beams can be easily operated, using a grip to lock or release and extend or retract. Further more safety, new lock system prevents the outrigger beams from extending during vehicle travel. A level gauge is provided as standard equipment.



NOTE:
The above lifting heights and boom angles are based on a straight (unladen) boom, and allowance should be made for boom deflection obtained under laden conditions.



* The cables and sheaves are all internal - for a clean, clutter - free appearance.

► **Max.Boom Extended length**

MODEL	ZE503HRS	ZE504HRS	ZE505HRS	ZE505LHRS
CRANE CAPACITY	3,130kg at 3.8m (4-part lines)	3,130kg at 3.7m (4-part lines)	3,130kg at 3.6m (4-part lines)	3,130kg at 3.6m (4-part lines)
BOOM	Fully hydraulic telescoping boom of heptagonal box construction	Fully powered partly synchronized telescoping boom of heptagonal box construction		
Sections	3	4	5	5
Length	3.47m - 8.31m	3.55m - 10.8m	3.77m - 13.34m	4.32m - 15.69m
Extending Speed	4.84m / 18s	7.25m / 21s	9.57m / 25s	11.37m / 29.5s
Elevation Range/Speed	1° to 78° /12s			
Max. Hook Height*	Approx. 10.3m*	Approx. 12.7m*	Approx. 15.2m*	Approx. 17.5m*
Max. Load Radius*	8.09m*	10.58m*	13.12m*	15.47m*
WINCH	Hydraulic motor driven. Spur gear speed reduction, provided with mechanical brake.			
Max. Single Line Pull	7.70kN {785kgf}			
Max. Single Line Speed	76m/min. (at 4th layer)			
Wire rope (Diameter x length)	8mm x 56m	8mm x 69m	8mm x 81m	8mm x 93m
SWING	Hydraulic motor driven. Worm gear speed reduction. Continuous 360° full circle swing on ball bearing slew ring. Automatic swing lock.			
Speed	2.5 min ⁻¹ {rpm}			
OUTRIGGERS	Manually extended sliders and hydraulically extended jacks Integral with crane frame Power up and down Max.: 3.8m, Mid.: 3.0m, Min.: 2.2m			
HYDRAULIC SYSTEM	Multiple control valves with integral safety valve			
Control Valves				
STANDARD SAFETY EQUIPMENT	•AML(Automatic Moment Limiter) <Load indication, Load moment ratio to rated load indication, Warning alarm, Over load limiter> •WHL(Working Height Limiter) •Load meter •Radius indicator •Emergency stop switch on radio controller •Terminal for emergency stop switch •Over-winding alarm •Hoisting limiter •Jack interlock •P.T.O indicator lamp •Hook safety latch •Hydraulic safety valves, check valves and holding valves •Level gauge			
SUITABLE TRUCKS	Gross vehicle mass 12,000 to 25,000kg			

Table A												
ZE503HRS												
• 3.47m/5.91m/8.31m boom												
Load Radius (m)	3.4	3.8	4.1	4.5	5.0	5.5	6.0	6.5	7.0	7.5	8.09	
Rated Lifting Capacity (kg)	3,130	2,680	2,430	2,030	1,730	1,430	1,330	1,180	1,030	930	830	
ZE504HRS												
• 3.55m/5.99m/8.39m boom												
Load Radius (m)	3.4	3.6	4.0	4.5	5.0	5.5	6.0	6.5	7.0	7.5	8.17	
Rated Lifting Capacity (kg)	3,130	2,930	2,430	1,980	1,680	1,430	1,180	1,130	1,000	900	780	
• 10.8m boom												
Load Radius (m)	4.0	4.5	5.0	6.0	7.0	8.0	9.0	10.0	10.58			
Rated Lifting Capacity (kg)	2,130	1,980	1,630	1,180	1,000	800	680	580	550			
ZE505HRS												
• 3.77m/6.21m/8.59m boom												
Load Radius (m)	3.4	3.6	3.9	4.5	5.0	5.5	6.0	6.5	7.0	7.5	8.37	
Rated Lifting Capacity (kg)	3,130	2,930	2,530	1,930	1,630	1,380	1,130	1,050	930	830	650	
• 10.97m boom												
Load Radius (m)	4.0	4.5	5.0	6.0	7.0	8.0	9.0	10.0	10.57			
Rated Lifting Capacity (kg)	2,230	1,930	1,580	1,130	900	700	550	500	450			
• 13.34m boom												
Load Radius (m)	5.0	6.0	7.0	8.0	9.0	10.0	11.0	12.0	13.12			
Rated Lifting Capacity (kg)	1,430	1,130	900	700	550	500	430	400	350			

ZE503HRS											
• 3.47m/5.91m/8.31m boom											
Load Radius (m)	3.8 and below	4.1	4.5	5.0	5.5	6.0	6.5	7.0	7.5	8.0	8.09
Rated Lifting Capacity (kg)	3,130	2,930	2,480	2,080	1,780	1,580	1,430	1,280	1,130	1,030	
ZE504HRS											
• 3.55m/5.99m/8.39m boom											
Load Radius (m)	3.7 and below	4.0	4.5	5.0	5.5	6.0	6.5	7.0	7.5	8.17	
Rated Lifting Capacity (kg)	3,130	2,930	2,430	2,030	1,730	1,480	1,380	1,230	1,080	980	
• 10.8m boom											
Load Radius (m)	4.5 and below	5.0	6.0	7.0	8.0	9.0	10.0	10.8			
Rated Lifting Capacity (kg)	2,130	1,980	1,480	1,180	950	880	730	680			
ZE505HRS											
• 3.77m/6.21m/8.59m boom											
Load Radius (m)	3.6 and below	3.9	4.5	5.0	5.5	6.0	6.5	7.0	7.5	8.37	
Rated Lifting Capacity (kg)	3,130	2,930	2,430	1,980	1,680	1,430	1,330	1,130	1,030	830	
• 10.97m boom											
Load Radius (m)	4.0 and below	4.5	5.0	6.0	7.0	8.0	9.0	10.0	10.75		
Rated Lifting Capacity (kg)	2,230	2,180	1,930	1,430	1,130	880	730	650	580		
• 13.34m boom											
Load Radius (m)	5.0 and below	6.0	7.0	8.0	9.0	10.0	11.0	12.0	13.12		
Rated Lifting Capacity (kg)	1,430	1,330	1,130	880	730	650	550	500	430		
ZE505HRS											
• 4.32m/7.21m/10.04m boom											
Load Radius (m)	3.6 and below	3.9	4.5	5.0	5.5	6.0	6.5	7.0	8.0	9.0	9.82
Rated Lifting Capacity (kg)	3,130	2,930	2,380	1,980	1,680	1,430	1,230	1,030	880	680	600
• 12.87m boom											
Load Radius (m)	4.0 and below	4.5	5.0	6.0	7.0	8.0	9.0	10.0	11.0	12.0	12.65
Rated Lifting Capacity (kg)	1,980	1,930	1,830	1,380	1,030	880	650	580	500	430	400
• 15.69m boom											
Load Radius (m)	10.0 and below	11.0	12.0	13.0	14.0	15.47					
Rated Lifting Capacity (kg)	530	500	430	380	350	280					

1. Operating speeds of the crane are guaranteed under the conditions that the pump delivery is 60L/min.
2. **No allowance made for boom deflection under laden conditions.

The mass of hook (30kg), slings and all similarly used load handling devices must be added to the mass of the load.

ZE503HRS										
• 3.47m/5.91m/8.31m boom										
Load Radius (m)	3.8 and below	4.1	4.5	5.0	5.5	6.0	6.5	7.0	7.5	8.09
Rated Lifting Capacity (kg)	3,130	2,930	2,630	2,380	2,130	1,880	1,730	1,530	1,380	1,230
ZE504HRS										
• 3.55m/5.99m/8.39m boom										
Load Radius (m)	3.7 and below	4.0	4.5	5.0	5.5	6.0	6.5	7.0	7.5	8.17
Rated Lifting Capacity (kg)	3,130	2,930	2,580	2,330	2,030	1,830	1,650	1,480	1,350	1,180
• 10.8m boom										
Load Radius (m)	4.5 and below	5.0	6.0	7.0	8.0	9.0	10.0	10.58		
Rated Lifting Capacity (kg)	2,130	2,030	1,780	1,480	1,200	1,030	900	830		
ZE505HRS										
• 3.77m/6.21m/8.59m boom										
Load Radius (m)	3.6 and below	3.9	4.5	5.0	5.5	6.0	6.5	7.0	7.5	8.37
Rated Lifting Capacity (kg)	3,130	2,930	2,530	2,230	1,980	1,730	1,580	1,430	1,250	1,050
• 10.97m boom										
Load Radius (m)	4.0 and below	4.5	5.0	6.0	7.0	8.0	9.0	10.0	10.57	
Rated Lifting Capacity (kg)	2,230	2,180	2,030	1,730	1,400	1,100	950	800	730	
• 13.34m boom										
Load Radius (m)	5.0 and below	6.0	7.0	8.0	9.0	10.0	11.0	12.0	13.12	
Rated Lifting Capacity (kg)	1,430	1,330	1,230	1,080	950	800	700	630	530	
ZE505LHRS										
• 4.32m/7.21m/10.04m boom										
Load Radius (m)	3.6 and below	3.9	4.5	5.0	5.5	6.0	6.5	7.0	8.0	9.82
Rated Lifting Capacity (kg)	3,130	2,930	2,480	2,180	1,930	1,730	1,530	1,330	1,080	880
• 12.87m boom										
Load Radius (m)	4.0 and below	4.5	5.0	6.0	7.0	8.0	9.0	10.0	11.0	12.0
Rated Lifting Capacity (kg)	1,980	1,930	1,830	1,580	1,330	1,080	830	730	650	580
• 15.69m boom										
Load Radius (m)	12.0 and below	13.0		14.0		15.47				
Rated Lifting Capacity (kg)	530	500		450		380				

ZE503HRS												
► 3.47m/5.91m/8.31m boom												
Load Radius (m)	3.8 and below	4.1	4.5	5.0	5.5	6.0	6.5	7.0	7.5	8.09		
Rated Lifting Capacity (kg)	3,130	2,930	2,630	2,380	2,180	1,980	1,830	1,680	1,530	1,430		
ZE504HRS												
► 3.55m/5.99m/8.39m boom												
Load Radius (m)	3.7 and below	4.0	4.5	5.0	5.5	6.0	6.5	7.0	7.5	8.17		
Rated Lifting Capacity (kg)	3,130	2,930	2,580	2,330	2,080	1,930	1,780	1,630	1,480	1,380		
► 10.8m boom												
Load Radius (m)	4.5 and below	5.0	6.0	7.0	8.0	9.0	10.0	10.58				
Rated Lifting Capacity (kg)	2,130	2,030	1,780	1,530	1,380	1,200	1,050	1,000				
ZE505HRS												
► 3.77m/6.21m/8.59m boom												
Load Radius (m)	3.6 and below	3.9	4.5	5.0	5.5	6.0	6.5	7.0	7.5	8.37		
Rated Lifting Capacity (kg)	3,130	2,930	2,530	2,230	1,980	1,780	1,630	1,480	1,380	1,180		
► 10.97m boom												
Load Radius (m)	4.0 and below	4.5	5.0	6.0	7.0	8.0	9.0	10.0	10.57			
Rated Lifting Capacity (kg)	2,230	2,180	2,030	1,730	1,430	1,230	1,080	980	900			
► 13.34m boom												
Load Radius (m)	5.0 and below	6.0	7.0	8.0	9.0	10.0	11.0	12.0	13.12			
Rated Lifting Capacity (kg)	1,430	1,330	1,230	1,080	980	880	800	730	650			
ZE505LHRS												
► 4.32m/7.21m/10.04m boom												
Load Radius (m)	3.6 and below	3.9	4.5	5.0	5.5	6.0	6.5	7.0	8.0	9.0	9.82	
Rated Lifting Capacity (kg)	3,130	2,930	2,480	2,180	1,930	1,730	1,530	1,380	1,180	980	880	
► 12.87m boom												
Load Radius (m)	4.0 and below	4.5	5.0	6.0	7.0	8.0	9.0	10.0	11.0	12.0	12.65	
Rated Lifting Capacity (kg)	1,980	1,930	1,830	1,580	1,330	1,130	950	850	780	700	650	
► 15.69m boom												
Load Radius (m)	15.47 and below											
Rated Lifting Capacity (kg)	530											



TADANO LTD. (International Division)

4-12, Kamezawa 2-chome, Sumida-ku Tokyo 130-0014, Japan

Tel: 81-3-3621-7750 Fax: 81-3-3621-7785

E-mail: tdnihq@tadano.co.jp

<http://www.tadano.co.jp/indexe.html>



Continuing technical development requires Tadano to retain the right to make specifications, equipment and price changes without notice. Some specifications are subject to change.

ZE500GHS_ZE500HRS-2012-02-1-2000 Printed in Japan