

# TRUCK-MOUNTED CRANES HC 153



**HYVA**<sup>®</sup> CRANE

# Raise your game HYVA PERFORMANCE



**1**  
**Forged hook attachment**  
Ruggedness and durability in all applications

**2**  
**Extra Extension Speed and Smart Extension Sequence**  
Fast, precise, safe

**3**  
**Link on second boom**  
Efficiency in confined spaces thanks to the negative angle

**4**  
**Link on column**  
Constant lifting capacity on all main boom positions

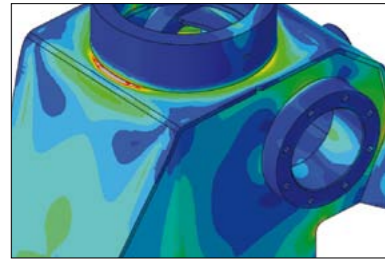
**5**  
**Ergonomic control station and user-friendly interface**  
Comfort, easy to use and safe

**6**  
**425° Slewing angle**  
The widest slewing angle for medium sized cranes

**7**  
**Always stable**  
More than 40 stabilizer combinations available

# Technology

## High tech development



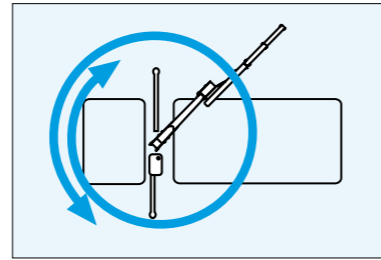
- Structures optimised for strength, weight and speed

## Top Protection



- High value retention
- Top reliability

## 425° Slewing Angle



- The widest slewing angle for medium sized cranes
- Top efficiency and easy to use

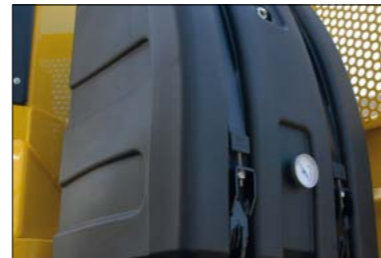
## Functional Aesthetic



Forged double linkages on column and 2nd boom

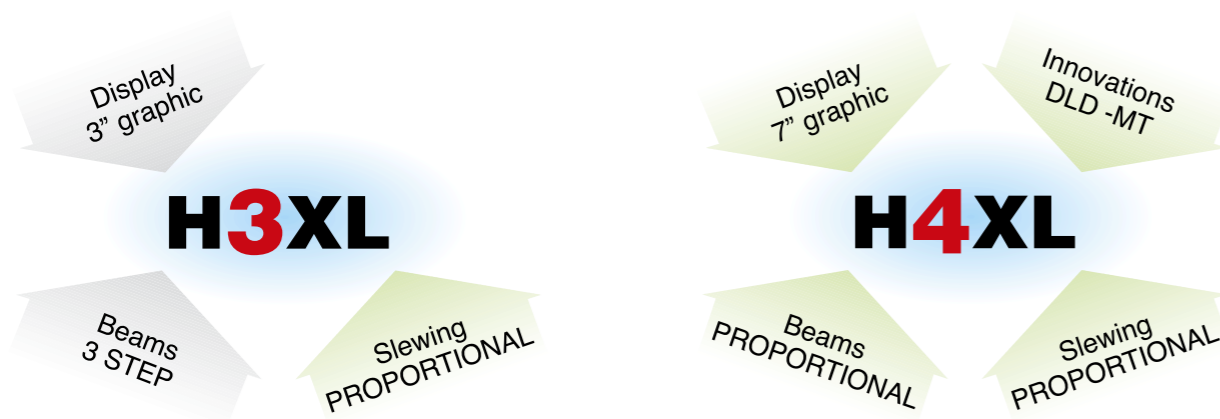


Robust column design and hoses cover



High volume oil tank made in sandwich-structured materials (PEX and PA6)

## Crane control system



### H3XL

With a 3" TFT display and ergonomic keyboards, the operator can supervise the crane working and select the best parameters for effective use. The system controls the stability with 3-step beam outreach monitoring and continuous slewing control.

### H4XL

A 7" colour display with integrated keyboard gives the operator a higher level of awareness of the crane operation and allows selection of the best parameters for effective use. The system detects the exact position of the beams and proportionally calculates the stability.

Control station distinguished by operator comfort and user-friendly interface derived from dedicated ergonomic and user preference studies



**7" color display**  
Simple and quick access to all the functions and information

**Vertical stabilizers levers**  
Safe and fast. Excellent supervision of stabilizing operation

## DLD Dynamic Load Diagram



**Crane lifting capacity always under control in all stabilizer positions.** After the stabilization, operator can select the load to be lifted. Display shows the permitted crane outreach based on the stability and the load selected.

- Improve the efficiency loading/unloading cycle.
- Easy to use and safety optimised.

## MT Magic Touch



**Crane Automatic folding/unfolding.** System allows driver to open the crane from fold position to working position and back to transporting position by the pressure of a single lever on radio transmitter (or a button on the display).

- Easy to start and close.
- Save time, increase productivity and safety.

## Wide range Radio selection (Standard)



Powered by



Hetronic CE Basic



Scanreco



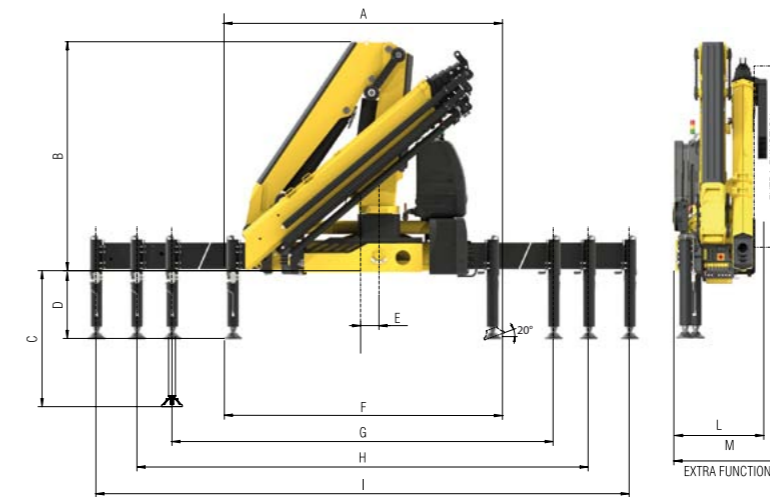
Hetronic CE Graphic



Truck-mounted cranes



## Technical data



	E2	E3	E4	E5	E6
A	2450	2450	2450	2450	2450
B	2330	2330	2330	2330	2330
C	1362	1362	1362	1362	1362
D	670	670	670	670	670
E	160	160	160	160	160
F	2445	2445	2445	2445	2445
G	4200	4200	4200	4200	4200
H	5400	5400	5400	5400	5400
I	6600	6600	6600	6600	6600
L	817	817	817	890	890
M	960	960	960	1020	1020

Model	kg	m	kg	m	kg	m	kg	m	kg	m	kg	m
E2	3010	4,63	2060	6,58	1570	8,53	1160	10,91	870	12,96	655	15,11
E3	2870	4,71	1940	6,66	1455	8,61	1160	10,66	870	12,96	655	17,26
E4	2740	4,80	1825	6,75	1345	8,70	1050	10,75	870	12,80	655	19,36
E5	2615	4,88	1720	6,83	1245	8,78	955	10,83	775	12,88	655	19,36
E6	2505	4,96	1625	6,91	1155	8,86	865	10,91	685	12,96	565	19,36

### Standard

- Multifunctional radio remote control
- Sauer Danfoss PVG32
- Load limit device
- P-LCS Proportional Lift Control System
- Flanged valves
- Designed in accordance with EN12999
- Design class: HC1-HD5
- Oil tank
- Manually extendable stabilizers
- Internal stabilizers pipes
- Fixed stabilizer cylinders
- Swivel stabilizer foot
- Centralized greasing system
- EES Extra Extension Speed
- SDS Smooth Descent System
- LAS Liftrod Articulating System
- H3XL Crane control system (CE)

## One model, many applications



Construction



Oil&Gas



Mining



Rental



Waste handling



Logistic



Gardening



Power station

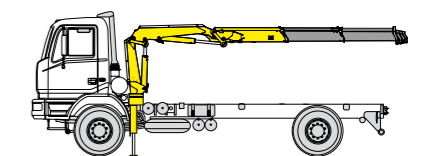


Maintenance



Building

		E2	E3	E4	E5	E6
Lift Moment	tm	13,9	13,5	13,2	12,8	12,4
Slewing Angle	°	425	425	425	425	425
Working pressure	bar	325	325	325	325	325
Oil tank capacity	l	130	130	130	130	130
Max Oil flow	l/m	60	60	60	60	60
Max lifting height	m	12,2	14,4	16,5	18,8	21
Standard crane weight	kg	1820	1935	2040	2140	2230



Recommended truck M.T.T. ton 12 - G.V.W. ton 12

# TRUCK-MOUNTED CRANES

# HC 153



Tipping Solutions | Container Handling | Waste Handling | Cranes



Quality and environmental certified



**HYVA Holding B.V.**

Antonie van Leeuwenhoekweg 37

2408 AK Alphen aan den Rijn

The Netherlands

Telephone: (31)172 - 42 35 55

Telefax: (31)172 - 42 08 80

info@hyva.com

www.hyva.com

www.hyvacrane.com

Dealer

Data, descriptions, and illustrations pertain only and uniquely to models sold at the time of printing of this brochure. After the date of printing, this information is purely indicative and not binding upon HYVA. Future modifications are solely at the discretion of HYVA and are always in compliance with applicable and pertinent safety standards. To obtain updated data, descriptions, and illustrations, contact the manufacturer or your reseller. Cranes manufactured and/or marketed by HYVA. HYVA is not responsible for the special applications depicted. Crane applications and accessories described herein are only examples. Some applications and equipment shown may not be approved for use in CE countries or other areas. It is the installer's responsibility to ensure that the crane is applied correctly, and that its application, installation, and accessories maintain safety and comply with all local laws.

DATE OF PRINTING: 01/04/2016